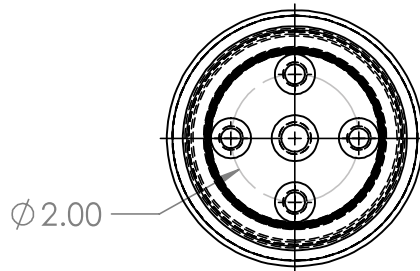
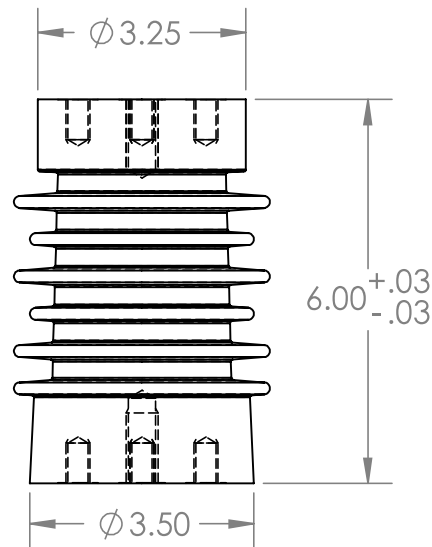


TECHNICAL REQUIREMENTS:	
CATILEVER STRENGTH	1250# [5.69KN]
TENSILE STRENGTH	3000# [13.7KN]
TORSION STRENGTH	3500# [0.41KN.M]
COMPRESSION STRENGTH	20000# [91KN]
NEMA VOLTAGE RATING	13.2KV
60HERTZ WITHSTAND-DRY	36KV
60 HERTZ WITHSTAND-DEW	26KV
IMPULSE WITHSTAND	95KV
APPLICABLE STANDARD	ANSI C29.10-1989



REV. #:	REVISED BY:	DESCRIPTION:
		<b>INDOOR BUS SUPPORT</b>
MATERIAL	SIZE	PART NO.
CYCLOALIPHATIC EPOXY	<b>A</b>	<b>A20-3-OC</b>
FINISH	SCALE: NTS	WEIGHT:
DO NOT SCALE DRAWING		SHEET 1 OF 1



MV POWER LLC  
2811 Hastings Road  
Eric, PA 16506  
Tel: 814-520-6385  
Email: info@mvpower.us  
Web: www.mvpower.us

**PROPRIETARY AND CONFIDENTIAL**  
THE INFORMATION CONTAINED IN THIS DRAWING IS THE SOLE PROPERTY OF MEISTER INTL. ANY REPRODUCTION IN PART OR AS A WHOLE WITHOUT THE WRITTEN PERMISSION OF MEISTER INTL. IS PROHIBITED.

B

B

A

A