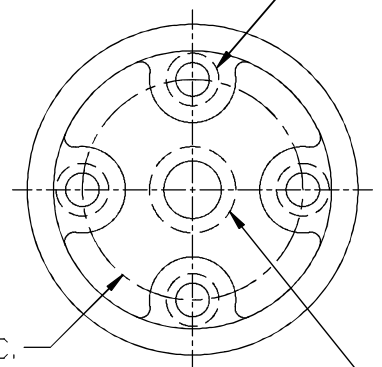


(4) 1/2-13 TH'D HOLES  
x 11/16" GOOD THREAD



3" [76mm] D.B.C.

3/4-10 BOH HOLE  
x 11/16" GOOD THREAD

VIEW "A-A"  
(TYP. TOP & BOTTOM)

DESCRIPTION  
HIGH-STRENGTH BUS INSULATOR

UNGLAZED FIRING SURFACE

DIMENSIONS  
HEIGHT 7.375" [187mm]  
DIAMETER 7.00" [178MM]  
BOLT CIRCLE DIA. 3.00" [76MM]  
LEAKAGE DISTANCE 13.25" [337MM]

MECHANICAL VALUES  
TENSILE 7,900LBS [35kN]  
COMPRESSION 50,000LBS [222kN]  
CANTILEVER 3,100LBS [14kN]  
TORSION 17,000LBS [76kN]

NOTES:

- 1) INSULATOR MATERIAL = WET PROCESS PORCELAIN WITH ANSI #70 LIGHT GRAY GLAZE
- 2) INSERT MATERIAL = GALVANIZED STEEL

ELECTRICAL VALUES  
DRY WITHSTAND (1 MIN) 50kV  
DRY FLASHOVER 50kV  
DEW WITHSTAND (10 SEC) 50kV  
DEW FLASHOVER 50kV  
IMPULSE WITHSTAND + 110kV  
IMPULSE WITHSTAND - 110kV