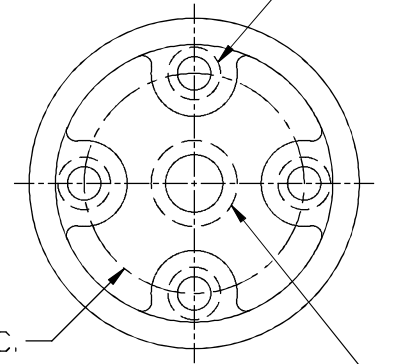


(4) 1/2-13 TH'D HOLES
 x 11/16" GOOD THREAD



3" [76mm] D.B.C.

3/4-10 BOH HOLE
 x 11/16" GOOD THREAD

VIEW "A-A"
 (TYP. TOP & BOTTOM)

DESCRIPTION
 HIGH-STRENGTH BUS INSULATOR

UNGLAZED FIRING SURFACE

DIMENSIONS
 HEIGHT 10.375" [264mm]
 DIAMETER 7.00" [178MM]
 BOLT CIRCLE DIA. 3.00" [76MM]
 LEAKAGE DISTANCE 19.00" [483MM]

MECHANICAL VALUES
 TENSILE 7,900LBS [35kN]
 COMPRESSION 50,000LBS [222kN]
 CANTILEVER 3,100LBS [14kN]
 TORSION 14,800LBS [66kN]

ELECTRICAL VALUES
 DRY WITHSTAND (1 MIN) 80kV
 DRY FLASHOVER 80kV
 DEW WITHSTAND (10 SEC) 70kV
 DEW FLASHOVER 70kV
 IMPULSE WITHSTAND + 150kV
 IMPULSE WITHSTAND - 150kV

NOTES:

- 1) INSULATOR MATERIAL = WET PROCESS PORCELAIN WITH ANSI #70 LIGHT GRAY GLAZE
- 2) INSERT MATERIAL = GALVANIZED STEEL