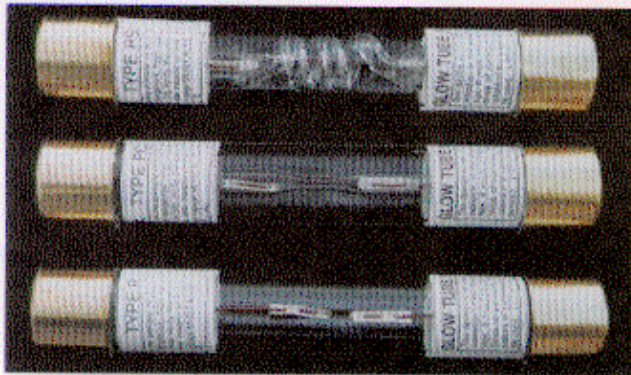


MEDIUM VOLTAGE SWITCHGEAR GLOW TUBES AND ACCESSORIES

GLOW TUBES

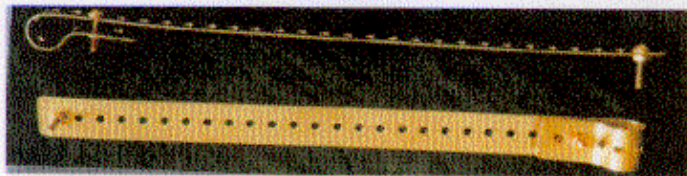


Dimensions: 0.81" diameter by 4.5" long
Neon filled inner glass tube encased in a protective outer glass case sealed with two brass end caps.

Type RS Product Code 05010002
Type PC Product Code 05010003
Type R Product Code 05010001

MOUNTING CLAMP

Product Code 05010007



Dimensions: 1.125" wide by 18" long 0.25" holes on 1" centers
14 gauge brass strapping used to mount single Glow Tubes in buss or cable installations. Pre-bent loop to clamp onto one end of a Glow Tube. Can be assembled and bent to fit the required configuration.

MOUNTING BRACKET - IBB

Product Code 05010051-4(for 4" or greater buss)



Product Code 05010051-2 (for 2" buss -- not shown)

Dimensions: 1.125" wide by 18" long 0.25" holes on 1" centers
14 gauge brass strapping used to mount Glow Tubes in bare or insulated buss installations.

Includes a copper stiffening bar and teflon strip. Can be assembled and bent to fit required configurations.

MOUNTING CLIPS

Product Code 05010090



Copper clips and pre-bent brass loops are designed to be used to mount Glow Tubes in a variety of installation applications.

MOUNTING LOOPS

Product code 05010091



MV POWER

Medium Voltage Solutions

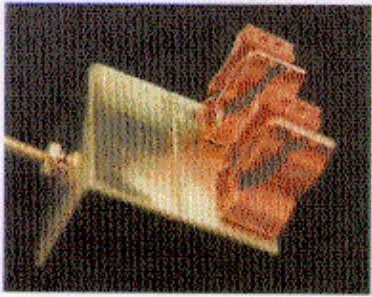
MV POWER LLC
2811 Hastings Road
Erie, PA 16506

Tel: 814-520-6385
Email: info@mvpower.us
Web: www.mvpower.us

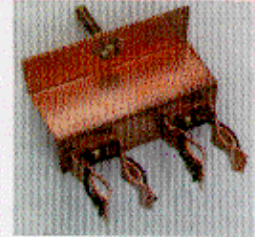
MEDIUM VOLTAGE SWITCHGEAR GLOW TUBES AND ACCESSORIES

MOUNTING BRACKETS

LL Prod. Code 05010055 Dual unit shown ZZ Prod. Code 05010050 Dual unit shown
L - Prod. Code 05010056 Single unit avail. Z -Prod. Code 05010049 Single unit avail.

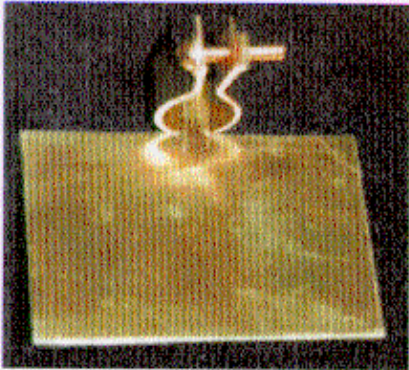


14 gauge brass mounting bracket for bare buss installations is offered in single or dual Glow Tube configurations. Flexible mounting bracket designs allow for various mounting orientations to achieve visibility from the viewing window as well as achieving an angle away from the buss to improve illumination. This can be combined with the Mounting Clamp to be used on insulated buss installations.



CONDENSER PLATE

Product Code 05010076



Dimensions: 3.0" wide by 2.5" long
14 gauge brass condenser plate with a pre-bent loop which can be used to firmly clamp onto the free end of a Glow Tube to enhance performance.

ANTENNA

with Clip Product code 05010070
with Loop Product code 05010071



Brass loop-shaped condenser plate with either a clip or a pre-bent loop which can be used to firmly clamp onto the free end of a Glow Tube to enhance performance.



MV POWER

Medium Voltage Solutions

MV POWER LLC
2811 Hastings Road
Erie, PA 16506

Tel: 814-520-6385
Email: info@mvpower.us
Web: www.mvpower.us